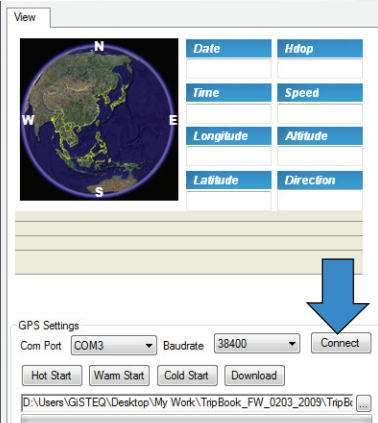


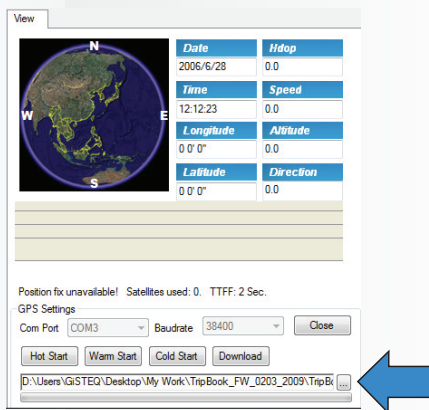
TripBook Firmware Upgrade

GiSTEQ™

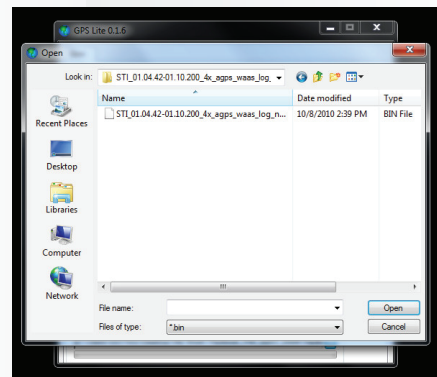


*** Please make sure the device driver is installed before plugging in the device.**

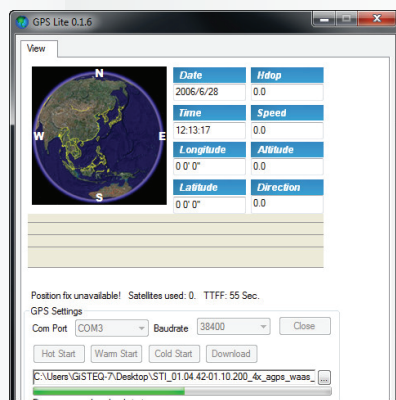
1. Plug the device into the computer and start the Firmware-Upgrade utility.
2. Select the right COM port and baud rate.
 - a. Default baud rate is 38400 bps
 - b. To find out what the COM port is, go to Control Panel->System->Hardware tab ->Device Manager, then double click on the Ports (COM & LPT), the port number will be shown next to the title Prolific USB-to-Serial Comm Port. For example, Prolific USB-to-Serial Comm Port (COM21) indicates the logger is currently using COM21.
3. Click "connect"



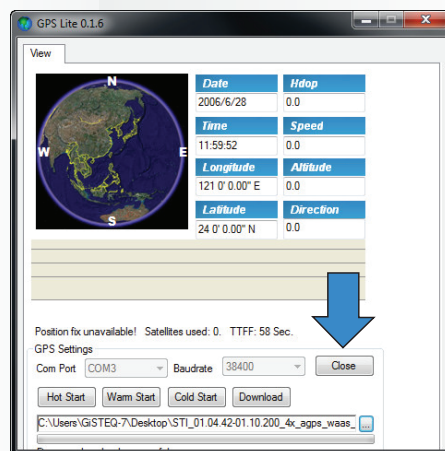
4. Once the logger is connected, you will see the date, time etc.



5. Click "..." to browse to the firmware file.



6. After the firmware file is selected, click "download" to upgrade the firmware.
7. Wait for the updating process to finish. The progress indicator will show you the updating process.



8. After it's finish, click "Close" to disconnect.